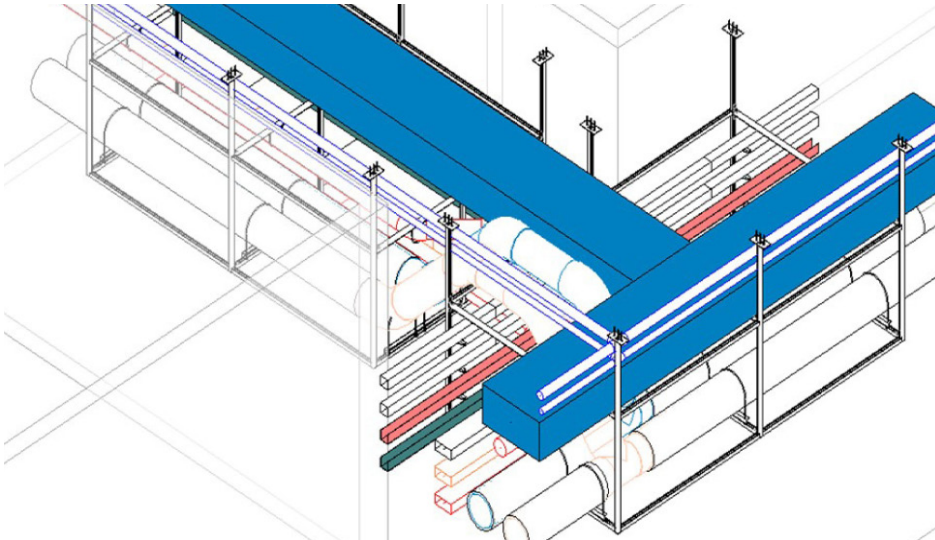


# BCA-STAS Introductory course on **MODULAR MEP DESIGN AND PREFABRICATION**



## INTRODUCTION

Aligned with the Construction Industry Transformation Map's thrust of Design for Manufacturing and Assembly (DfMA), the prefabricated modular MEP system is one of the identified key DfMA enablers to improve overall construction productivity in Singapore. BCA and Specialist Trade Alliance of Singapore (STAS) had earlier launched the Manufacturer Accreditation Scheme (MAS) for MEP in Nov 2018. As there is an increased adoption in using modular MEP system locally, it is important to train relevant professionals on how prefabricated modular MEP systems could be designed, fabricated in factory and installed to achieve its functional requirements and high workmanship standards to support industry's efforts in transforming into a highly mechanised, productive and efficient BE sector.

To increase depth of knowledge in design, manufacturing and installation to shorten learning curves, participants will gain an understanding of the:

- design consideration, coordination and fabrication of prefabricated modular MEP system
- logistics involved and site-based requirements;
- application of IDD in module production and installation;
- practical application on quality assurance and control in design, production and installation of MEP modules;
- best practices and how to set processes to produce high quality MEP systems; and
- processes and operation of MEP Manufacturing Facility.

## CONTENTS

- Prefab MEP Manufacturer Accreditation Scheme Process
- Procurement process in prefab MEP modularization
- Modular Design sharing by Project / Design Consultant / MEP Specialist
- Implementation of IDD in prefab MEP modules and projects
- Production and Installation Process
- Digitalisation in prefab MEP Production Monitoring System

## DETAILS

**DATE:** 19 & 20 Jan 2022

**TIME:** 9.00am to 5.00pm

**VENUE:** BCA Braddell Campus

**FEE** (incl of GST):

S\$720 (without Funding)

S\$114.39# (with WTU funding support for eligible participants)

# For more information on the funding requirement, please refer to <https://www1.bca.gov.sg/buildsg/buildsg-transformation-fund/workforce-training-and-upgrading-scheme-wtu>

## SPEAKERS

MEP Industry Practitioners, STAS & BCA

## TARGET AUDIENCE

Developers, engineers, builders, prefab suppliers, and MEP subcontractors

## AWARD FOR CERTIFICATE

e-Certificate of Successful Completion (e-CSC) upon meeting minimum 75% attendance and passed the assessment.

## CPD POINTS

**PEB:** Pending

### Registration

To register, please log into our Online StoreFront (OSF) at <https://eservices.bcaa.edu.sg/registration/#/login> or scan QRcode and search for course code **80067**



80067.220921.0001